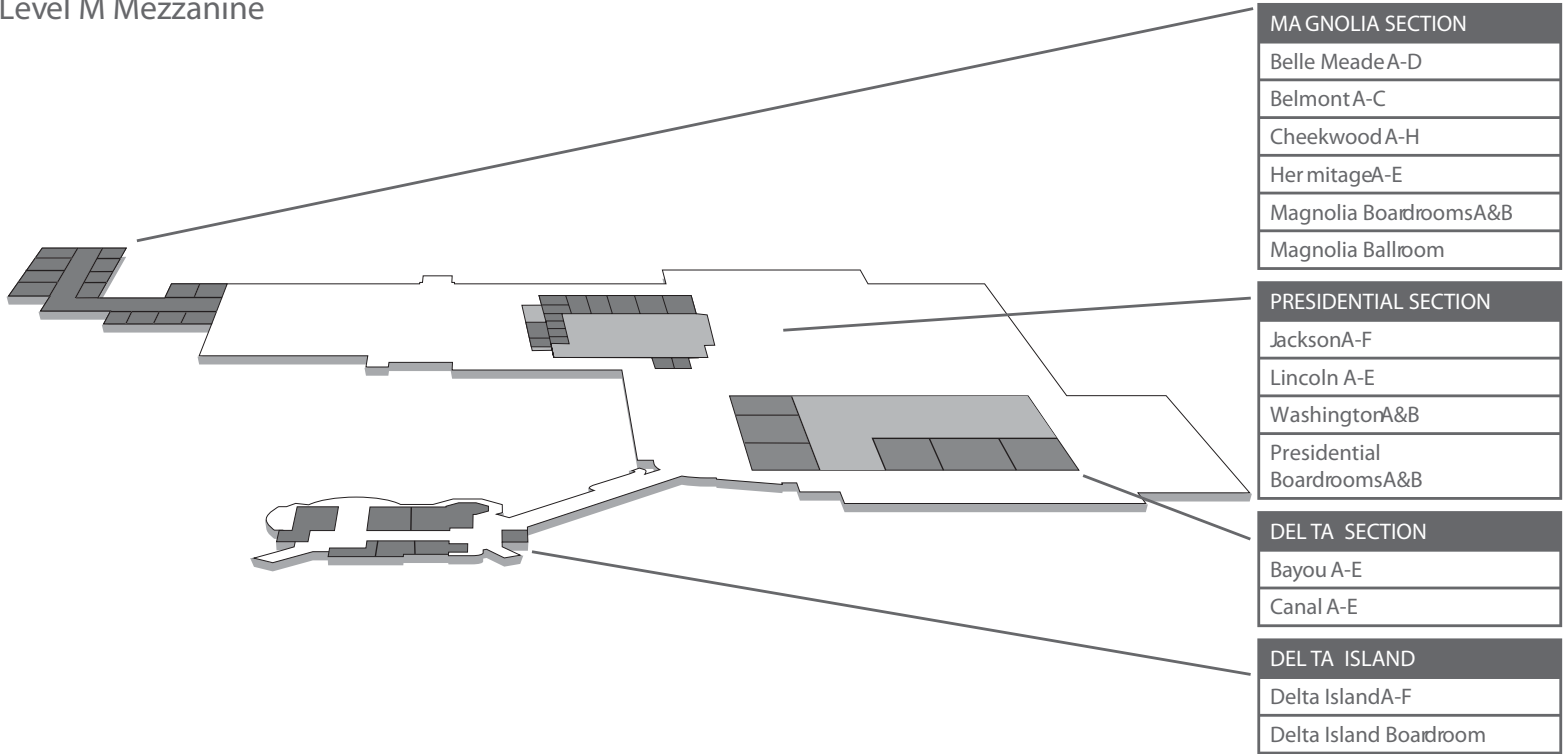


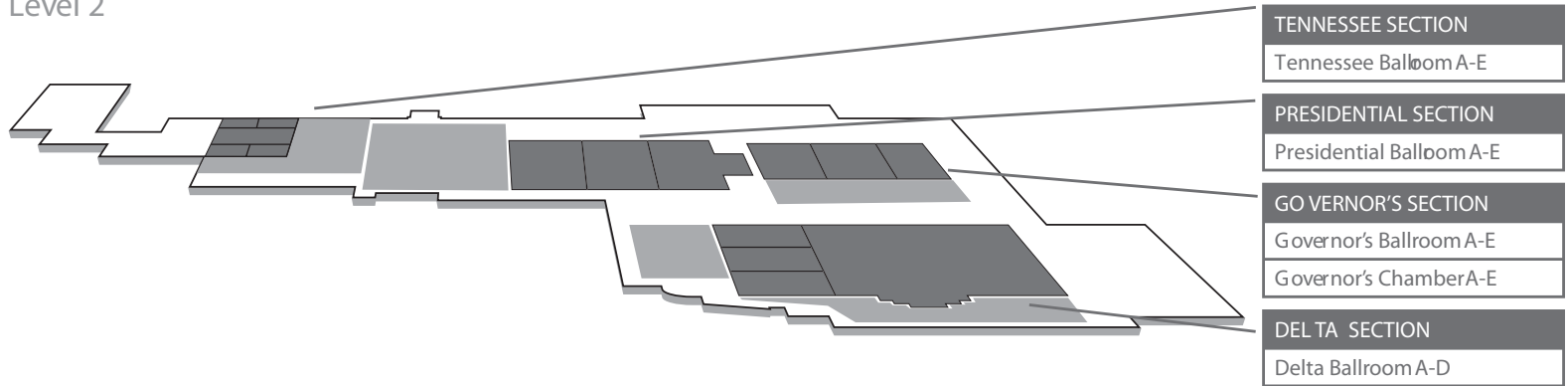
## Conference Rooms & Delta Island

Level M Mezzanine



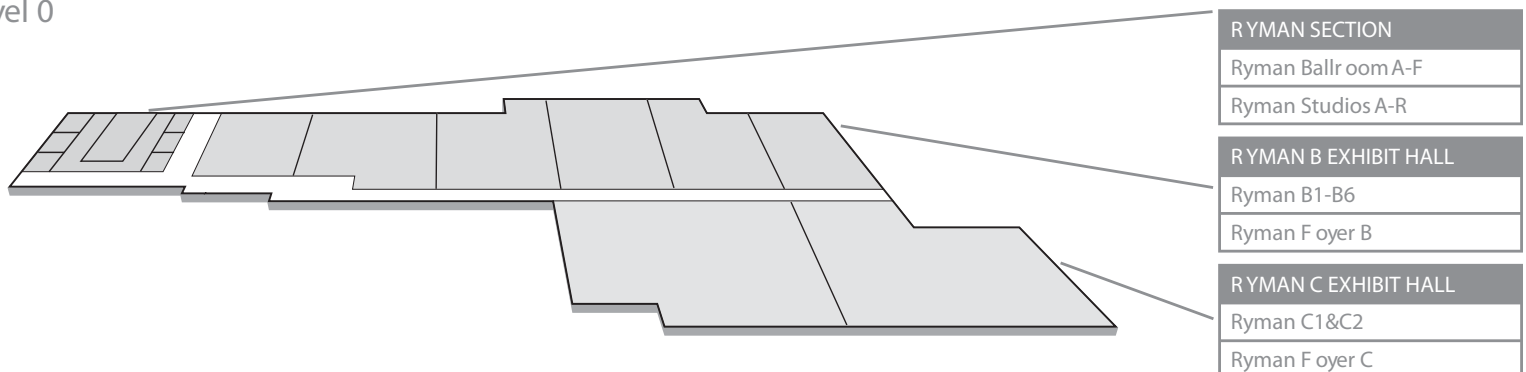
## Ballrooms

Level 2



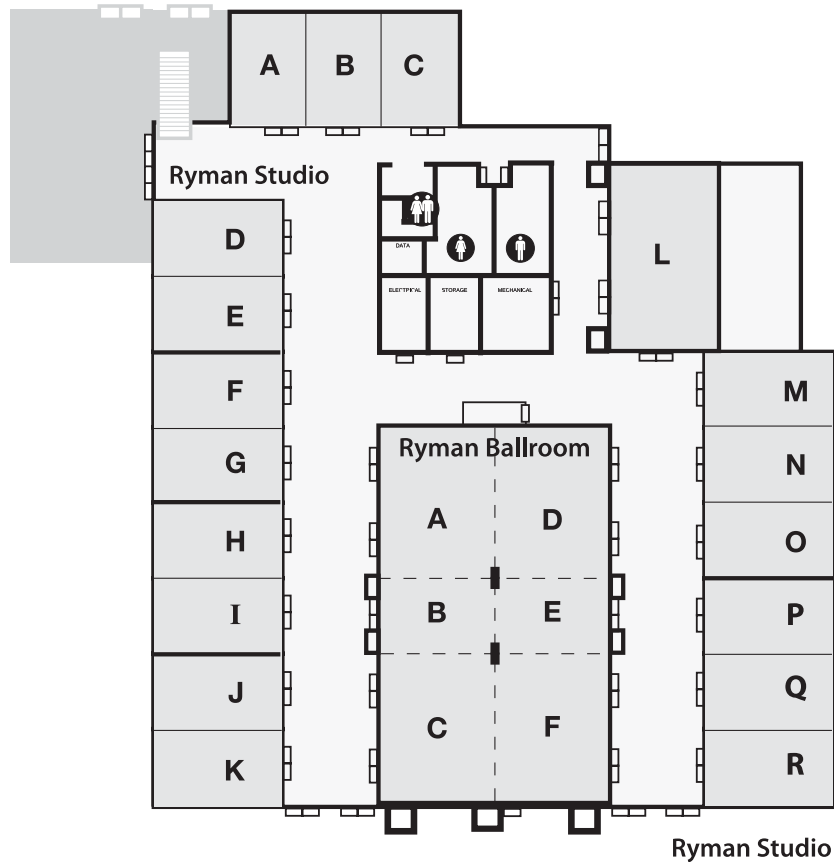
## Conference Rooms & Exhibition Facilities

Level 0



LEVEL 0

	THEATER	CLASSROOM	CONFERENCE	U-SHAPE	BANQUETS	OFFICE	RECEPTION	WIDTH	LENGTH	TOTAL SQ. FT.	CEILING HT.
Ryman Ballroom	588	288			390	548	60' 7"	99' 7"	6,033	13'	
Ryman A	110	54	28	30	60	109	39' 7"	30' 5"	1,204	13'	
Ryman B	42	24	16	21	20	54	19' 8"	30' 5"	598	13'	
Ryman C	110	54	28	30	60	111	40' 3"	30' 5"	1,224	13'	
Ryman D	110	54	28	30	60	109	39' 7"	30' 2"	1,194	13'	
Ryman E	42	24	16	21	20	54	19' 8"	30' 2"	593	13'	
Ryman F	110	54	28	30	60	110	40' 3"	30' 2"	1,214	13'	
Ryman Studio ABC	125	63	46	51	90	151	28'	59'	1,663	11' 5"	
Ryman Studio A	36	24	16	21	30	50	29' 2"	19' 2"	554	11' 5"	
Ryman Studio B	36	24	16	21	30	50	29' 3"	19' 9"	554	11' 5"	
Ryman Studio C	36	24	16	21	30	50	29' 4"	19' 8"	554	11' 5"	
Ryman Studio DE	96	60	28	33	60	107	39' 2"	29' 9"	1,172	11' 5"	
Ryman Studio D	49	24	16	21	30	54	19' 9"	29' 9"	595	11' 5"	
Ryman Studio E	49	24	16	21	30	52	19' 3"	29' 9"	577	11' 5"	
Ryman Studio FG	96	60	28	33	60	106	39'	29' 9"	1,166	11' 5"	
Ryman Studio F	49	24	16	21	30	53	19' 4"	29' 9"	580	11' 5"	
Ryman Studio G	49	24	16	21	30	53	19' 6"	29' 9"	586	11' 5"	
Ryman Studio HI	96	60	28	36	60	107	39' 6"	29' 9"	1,172	11' 5"	
Ryman Studio H	49	24	16	21	30	53	19' 6"	29' 9"	586	11' 5"	
Ryman Studio I	49	24	16	21	30	53	19' 6"	29' 9"	586	11' 5"	
Ryman Studio JK	96	60	28	33	60	108	39' 7"	29' 9"	1,187	11' 5"	
Ryman Studio J	49	24	16	21	30	53	19' 6"	29' 9"	586	11' 5"	
Ryman Studio K	49	24	16	21	30	54	20' 1"	29' 9"	601	11' 5"	
Ryman Studio L	126	63	34	45	80	131	49' 7"	29'	1,438	11' 5"	
Ryman Studio MNO	135	81	46	48	90	158	58' 5"	29' 9"	1,733	11' 5"	
Ryman Studio M	49	24	16	21	30	52	19' 3"	29' 9"	571	11' 5"	
Ryman Studio N	49	24	16	21	30	53	19' 6"	29' 9"	579	11' 5"	
Ryman Studio O	49	24	16	21	30	53	19' 6"	29' 9"	579	11' 5"	
Ryman Studio PQR	150	90	46	51	90	160	59' 3"	29' 9"	1,758	11' 5"	
Ryman Studio P	49	24	16	21	30	53	19' 3"	29' 9"	579	11' 5"	
Ryman Studio Q	49	24	16	21	30	53	19' 6"	29' 9"	579	11' 5"	
Ryman Studio R	49	24	16	21	30	54	20' 1"	29' 9"	596	11' 5"	





# Conference Rooms

LEVEL M (MEZZANINE)	THEATER	CLASSROOM	CONFERENCE	U-SHAPE	BANQUETS	OF	RECEPTION	WIDTH	LENGTH	TOTAL SQ. FT.	CEILING HT.
<b>Delta Mezzanine</b>											
Delta Mezzanine											
Bayou AB	376	200			280	327	58' 7"	59' 5"	3,592	11' 5"	
Bayou A	180	100	50	60	140	168	29' 2"	65' 3"	1,849	11' 5"	
Bayou B	196	120	46	55	140	157	29' 1"	59' 5"	1,728	11' 5"	
Bayou CD	364	200			280	238	59' 4"	65' 3"	3,612	11' 4"	
Bayou C	200	126	50	59	140	169	29' 6"	65' 3"	1,862	11' 4"	
Bayou D	180	114	46	55	140	158	29' 6"	58' 9"	1,733	11' 4"	
Bayou E	270	165	50	62	190	238	41' 5"	65' 3"	2,619	11' 4"	
Canal ABCD	550	300			440	545	44' 9"	130' 3"	5,990	11' 4"	
Canal A	210	126	42	50	120	177	40' 11"	44' 9"	1,945	11' 4"	
Canal B	140	84	42	47	80	125	30' 9"	44' 9"	1,376	11' 4"	
Canal C	180	96	42	47	80	126	29' 8"	44' 9"	1,389	11' 4"	
Canal D	140	63	42	46	80	113	27' 11"	44' 8"	1,247	11' 4"	
Canal E	200	126	50	58	150	183	31' 2"	66'	2,011	11' 5"	
<b>Delta Island Mezzanine</b>											
Delta Island ABC	160	87	40	66	140	177	28' 2"	69' 3"	1,951	12' 6"	
Delta Island A	40	18	12	18	30	40	21' 4"	20' 7"	439	12' 6"	
Delta Island B	76	45	26	33	50	77	26' 7"	27' 8"	849	12' 6"	
Delta Island C	56	24	18	24	40	55	21' 4"	28' 2"	601	12' 6"	
Delta Island D	30	20	18	24	40	55	24' 8"	24' 5"	602	12' 6"	
Delta Island E	120	63	36	45	80	111	28' 2"	43' 6"	1,225	10' 11"	
Delta Island F	100	42	36	42	70	86	21' 2"	44' 11"	951	12' 5"	
Delta Island Boardroom			16				29' 7"	29' 11"	758	16' 11"	

