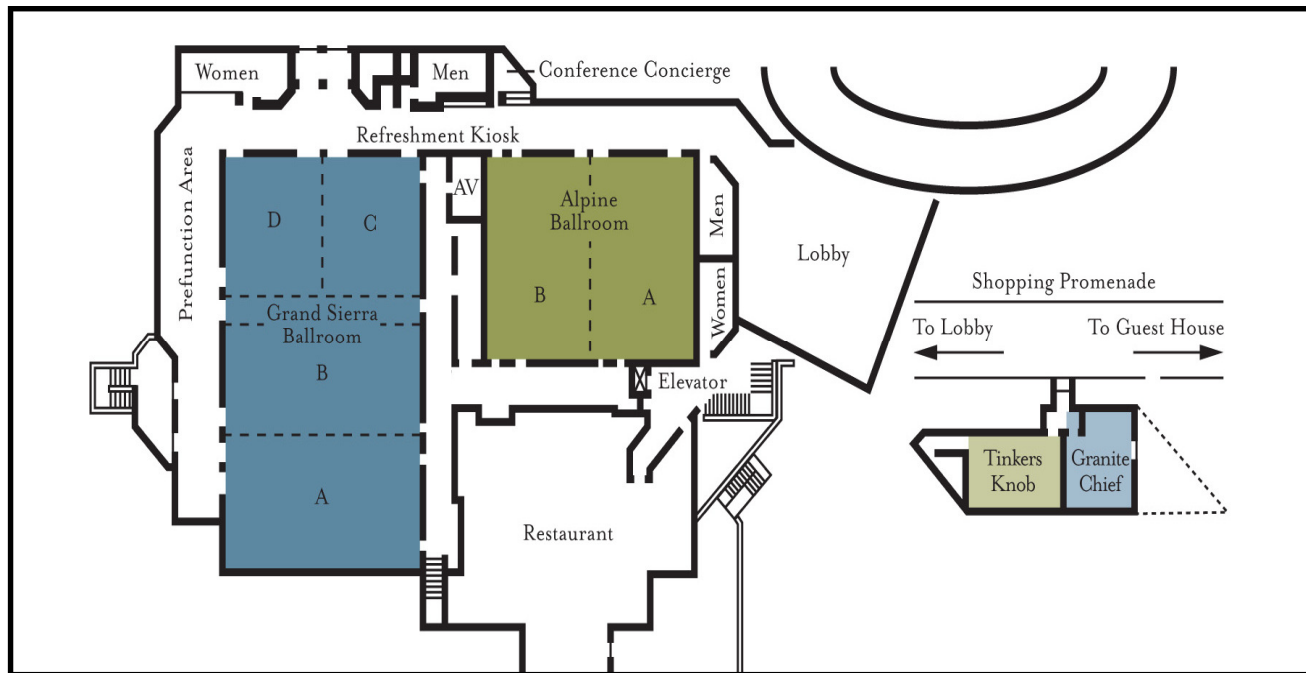


Resort at Squaw Creek™ Meeting Specs

Ballroom-Lobby Level

Conference Services

- In-room controls for lighting and AC/heat
- Built-in screen and white board
- Multiple phone lines and high-speed Internet Connections
- Green Meetings options



Audiovisual

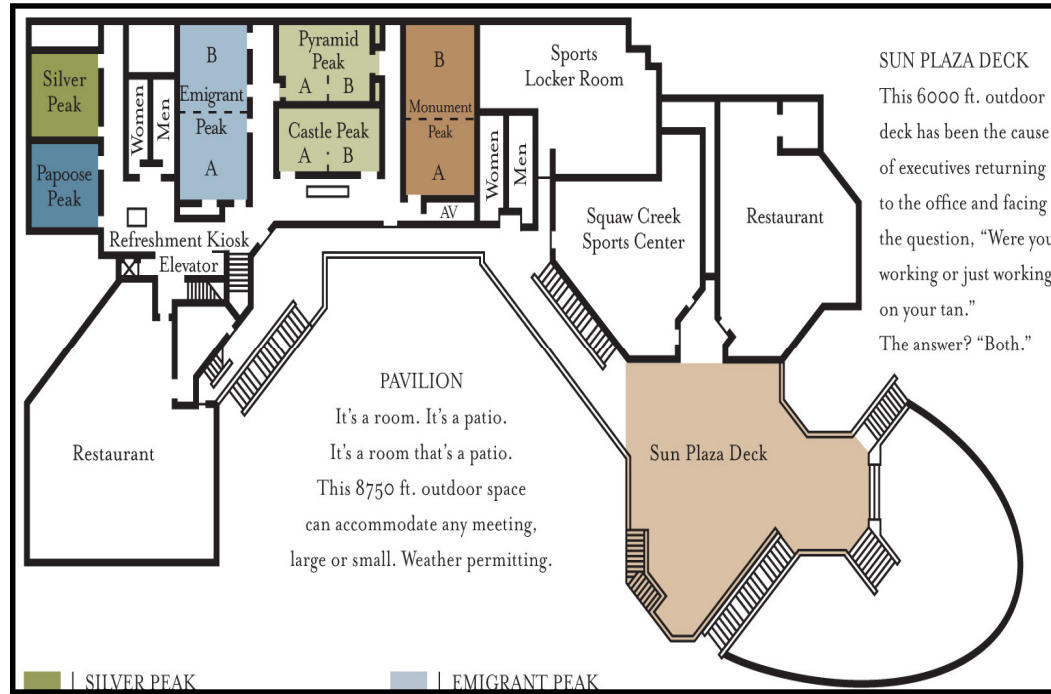
- Built-in rear screen projection
- Video projectors
- Teleconferencing and videoconferencing capabilities
- On-site technical support

| Room | Net. Sq. Feet | Dimensions | Ceiling Height | Max. Classroom | Executive Classroom | U-Shape | Hollow Square | Max. Theater | Executive Theater | Conf. | Banquet ¹ | Max. Occ. ² |
|----------------|---------------|------------|----------------|----------------|---------------------|---------|---------------|--------------|-------------------|-------|----------------------|------------------------|
| Grand Sierra | 9525' | 75' x 127' | 18' | 570 | 375 | | | 860 | 365 | | 600 | 953 |
| Division A | 3150' | 42' x 75' | 18' | 160 | 105 | 40 | 56 | 256 | 130 | | 180 | 315 |
| Division B | 3150' | 42' x 75' | 18' | 160 | 105 | 52 | 64 | 288 | 144 | | 200 | 315 |
| Division A & B | 6375' | 75' x 85' | 18' | 316 | 231 | | | 540 | 240 | | 420 | 638 |
| Division C & D | 3300' | 44' x 75' | 18' | 160 | 105 | 54 | 64 | 300 | 144 | | 180 | 330 |
| Division C | 1628' | 37' x 44' | 18' | 72 | 48 | 32 | 40 | 112 | 70 | | 90 | 163 |
| Division D | 1628' | 37' x 44' | 18' | 64 | 48 | 28 | 40 | 112 | 70 | | 90 | 163 |
| Alpine | 5120' | 64' x 80' | 16' | 264 | 180 | | | 480 | 260 | | 300 | 512 |
| Division A | 2560' | 40' x 64' | 16' | 144 | 120 | 52 | 64 | 240 | 120 | | 150 | 256 |
| Division B | 2560' | 40' x 64' | 16' | 120 | 90 | 40 | 56 | 196 | 108 | | 150 | 256 |
| Tinkers Knob | 840' | 24' x 35' | 10' | 32 | 20 | 28 | 32 | 50 | 40 | 24 | 40 | 84 |
| Granite Chief | 624' | 24' x 26' | 10' | 24 | 18 | 18 | 22 | 40 | 24 | 20 | 30 | 50 |

¹ based on rounds of 10
² based on standing room & fire regulations, No AV

Resort at Squaw Creek™ Meeting Specs

Meeting-Conference Level



Business Center

- Copiers and faxes
- Computer and high-speed Internet access
- Printing and typing services
- Office supplies
- FedEx and UPS shipping

Banquet Services

- Customized set-up and menu preparation
- Themed events and décor
- Boxed lunches and dinners for group outings

| Room | Net. Sq. Feet | Dimensions | Ceiling Height | Max. Classroom | Executive Classroom | U-Shape | Hollow Square | Max. Theater | Executive Theater | Conf. | Banquet ¹ | Max. Occ. ² |
|----------------|---------------|------------|----------------|----------------|---------------------|---------|---------------|--------------|-------------------|-------|----------------------|------------------------|
| Monument Peak | 1650' | 30' x 55' | 11' | 77 | 54 | 40 | 48 | 108 | 80 | | 80 | 165 |
| Division A | 810' | 27' x 30' | 11' | 30 | 21 | 20 | 24 | 50 | 40 | 20 | 40 | 81 |
| Division B | 810' | 27' x 30' | 11' | 32 | 21 | 20 | 24 | 50 | 40 | 20 | 40 | 81 |
| Emigrant Peak | 1650' | 30' x 55' | 11' | 77 | 54 | 40 | 48 | 108 | 80 | | 80 | 165 |
| Division A | 810' | 27' x 30' | 11' | 30 | 21 | 20 | 24 | 50 | 40 | 20 | 40 | 81 |
| Division B | 810' | 27' x 30' | 11' | 32 | 21 | 20 | 24 | 50 | 40 | 20 | 40 | 81 |
| Castle Peak | 1058' | 23' x 46' | 11' | 56 | 30 | 30 | 36 | 64 | 48 | | 50 | 106 |
| Division A | 529' | 23' x 23' | 11' | 24 | 18 | 16 | 20 | 32 | 24 | 18 | 20 | 53 |
| Division B | 529' | 23' x 23' | 11' | 24 | 18 | 16 | 20 | 32 | 24 | 18 | 20 | 53 |
| Pyramid Peak | 943' | 23' x 41' | 11' | 40 | 30 | 28 | 32 | 60 | 44 | | 50 | 94 |
| Division A | 460' | 20' x 23' | 11' | 18 | 12 | 15 | 20 | 30 | 20 | 16 | 20 | 46 |
| Division B | 460' | 20' x 23' | 11' | 18 | 18 | 16 | 20 | 30 | 24 | 18 | 20 | 46 |
| Silver Peak | 810' | 27' x 30' | 11' | 32 | 24 | 20 | 24 | 50 | 36 | 20 | 40 | 81 |
| Papoose Peak | 810' | 27' x 30' | 11' | 32 | 24 | 20 | 24 | 50 | 36 | 20 | 40 | 81 |
| Pavilion | 8750' | | | | | | | | | | | |
| Sun Plaza Deck | 6000' | | | | | | | | | | | |



¹ based on rounds of 10
² based on standing room & fire regulations