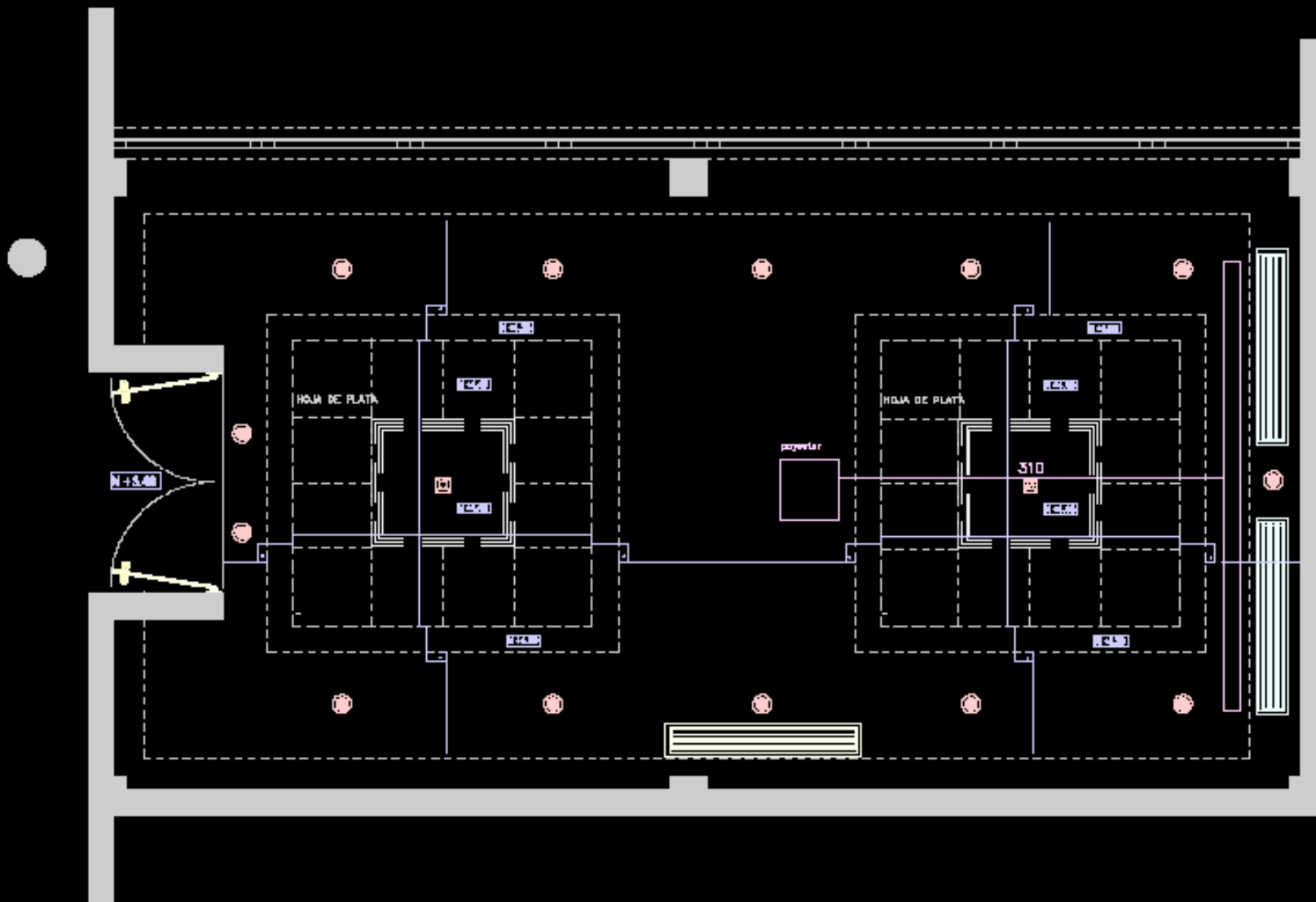


## TAINO BUILDING

ROOMS	DIMENSION	HEIGHT	DOORS	SCHOOL	THEATER	"U"TYPE	BANQUET
Taino I (Salon 11)	47.04m <sup>2</sup>	3mts	1	18	25	15	30
	506.33ft <sup>2</sup>	10fts					
Taino II (Salon 12)	74.40m <sup>2</sup>	3mts	1	24	25	20	40
	800.83ft <sup>2</sup>	10fts					

# Taino I (Salón 11)



## Taino II (Salón 12)

