



The Capitol
Kempinski Hotel

SINGAPORE

TIMELESS HERITAGE

Kempinski

HOTELIERS SINCE 1897

Singapore's Premier Address of Timeless Heritage

Located downtown in the charming civic and cultural district, the iconic Capitol Building and Stamford House unveil as The Capitol Kempinski Hotel Singapore. Blending beautifully conserved architecture with modern touches, this exclusive retreat promises luxury at its finest. The discovery continues with unparalleled shopping and dining experiences within footsteps, and direct access to the legendary Capitol Theatre, for hosting celebratory galas and extraordinary gatherings.



Facilities & Services

ROOMS AND SUITES

- Total 157 rooms and suites:
- Classic Rooms
- Deluxe Rooms
- Grand Deluxe Rooms
- Terrace Rooms
- Executive Suites
- Stamford Suites
- Bidwell Suites
- Heritage Suite

GUESTROOM FACILITIES

- Contemporary design
- Luxurious bathroom with freestanding bathtub and separate shower room
- Infotainment system
- Spacious work desk area
- Complimentary Wi-Fi
- Refrigerated private bar
- In-room safe

SERVICES AND AMENITIES

- Signature Lady in Red
- 24-hour laundry, dry-cleaning and ironing services
- 24-hour in-room dining
- 24-hour concierge services
- Shoeshine service
- Private butler services *(upon request)*
- Limousine service
- Underground parking garage
- Direct access to Capitol Piazza mall and neighbouring malls

STAY INCLUSIONS

- Complimentary non-alcoholic beverages from mini-bar, replenished daily
- Complimentary local calls
- Welcome cocktail
- Complimentary gourmet breakfast (for suite only)
- 24-hour stay (for suite only)

WELLNESS AND ACTIVITIES

- The Spa with three private spa suites for massages and beauty treatments
- Gym with TechnoGym equipment
- Outdoor salt-water relaxation pool

RESTAURANTS AND BARS

- Signature restaurant
- The Bar
- The Wine Lounge
- The Boutique
- Lobby Lounge

MEETINGS AND EVENTS

- The Atelier with audiovisual and video conferencing equipment
- Private pre-function area with open show kitchen
- Private dining room with high ceiling, natural daylight and integrated LED screens
- High-speed Internet and Wireless LAN access

GENERAL INFORMATION

- Currency: Singapore Dollar (SGD)
- Time zone: GMT +8 hours
- Climate: Tropical rainforest

PLACES OF INTEREST

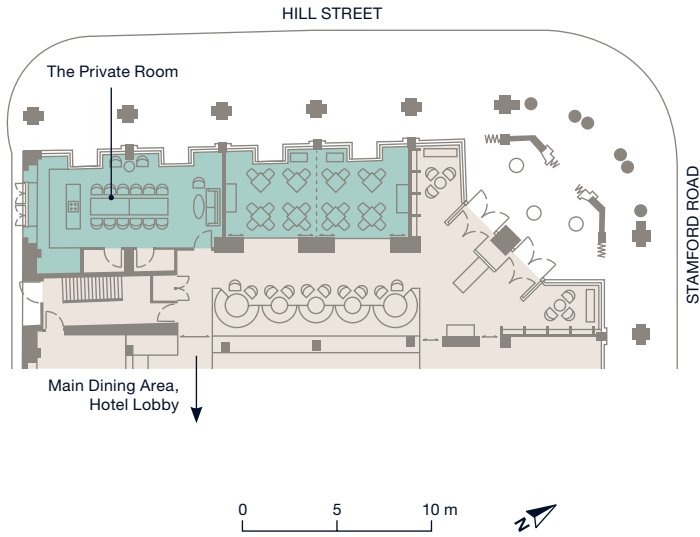
- Chijmes
- St. Andrew's Cathedral
- National Gallery
- Singapore Art Museum
- National Museum
- Fort Canning Park
- Peranakan Museum
- Boat Quay
- Clarke Quay
- Asian Civilisations Museum
- Esplanade

DIRECTIONS

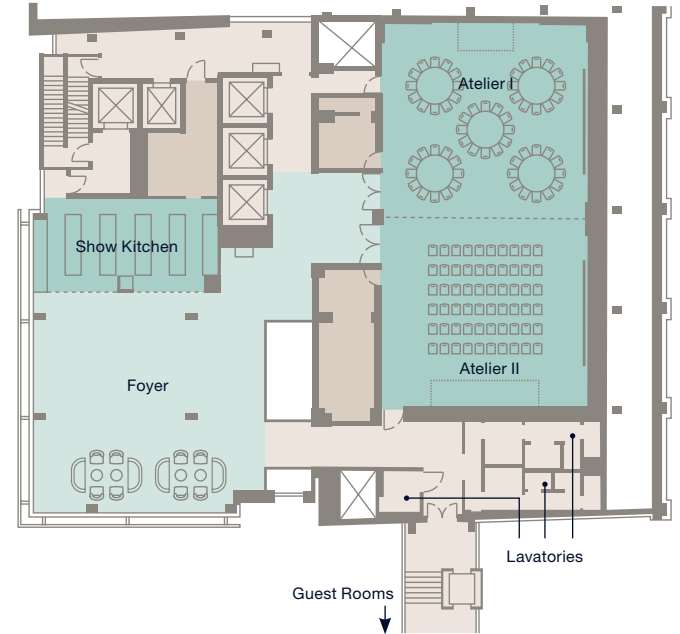
- City Hall MRT station, 150 m
- Changi Airport, 19 km
- Singapore Cruise Centre, 6 km

Meetings & Events Plan

GROUND FLOOR - PRIVATE DINING



4TH FLOOR - MEETING SPACE



ROOM	FLOOR AREA in sq m	LENGTH in m	WIDTH in m	CEILING HEIGHT in m	RECEPTION	BANQUET	THEATRE	CLASSROOM	U-SHAPE	BOARDROOM
Atelier I	115	10.5	11	2.4 - 4.4	80	50	110	54	24	26
Atelier II	115	10.5	11	2.4 - 4.4	80	50	110	54	24	26
The Atelier (I+II)	230	21	11	2.4 - 4.4	200	130	220	130	60	62
Foyer	144	11.5	12.5	2.4 - 2.8	130	-	-	-	-	-
The Private Room	41	4.5	9.2	3.4	-	-	-	-	-	12



Contact Us

For an easy and efficient booking experience, book directly with Kempinski, via kempinski.com, through the Kempinski mobile app, or your preferred travel professional, and benefit from the best rates and service.



THE CAPITOL KEMPINSKI HOTEL SINGAPORE

15 Stamford Road
Singapore 178906
Republic of Singapore

GPS DMS: 1°17'3"N, 103°51'4"E
GPS DD: 1.2940, 103.8510

Amadeus: KI SIN842
Worldspan: KI 2842
Sabre: KI 3286
Galileo: KI A9665
DHISCO: KI 4176